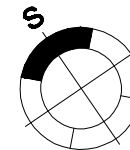


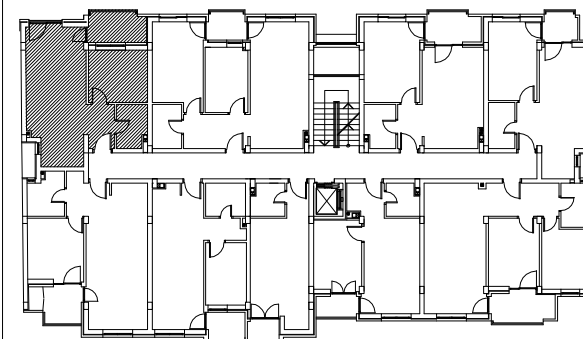
osnova stana R 1:100

STAN 42 - DVOSOBAN

1	ULAZ	3.39 m²
2	KUHINJA	3.84 m²
3	KUPATILO	3.90 m²
4	DNEVNA SOBA	19.79 m²
5	TERASA	5.27 m²
6	SPAVACA SOBA	9.23 m²
UKUPNO		45.42 m²



ULICA DOŽA ĐERĐA



ugao ulica DOŽA ĐERĐA 21 - 23

IV SPRAT

STAN 42