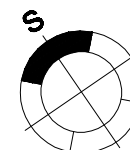


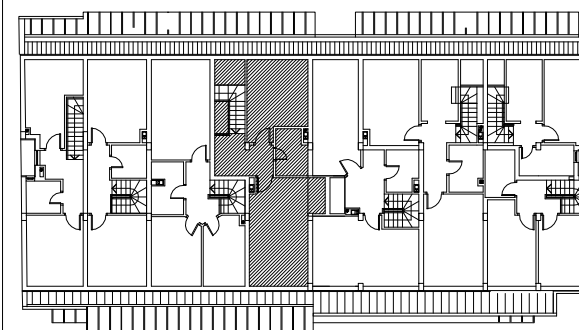
**osnova galerije
R 1:100**

STAN 52 - DUPLEKS

| | | |
|-------------------|------------------------|----------------------------|
| 7 | HODNIK SA STEP. | 8.75 m² |
| 8 | KUPATILO | 4.18 m² |
| 9 | SPAVACA SOBA | 9.33 m² |
| 10 | SPAVACA SOBA | 14.73 m² |
| GALERIJA | | 36.99 m² |
| POTKROVLJE | | 55.66 m² |
| UKUPNO | | 92.65 m² |



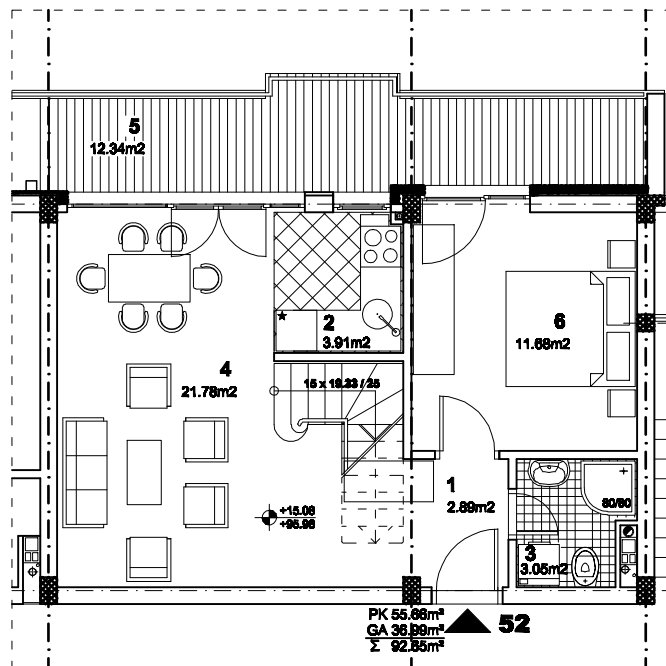
ULICA DOŽA ĐERĐA



ugao ulica DOŽA ĐERĐA 21 - 23

GALERIJA

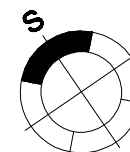
STAN 52



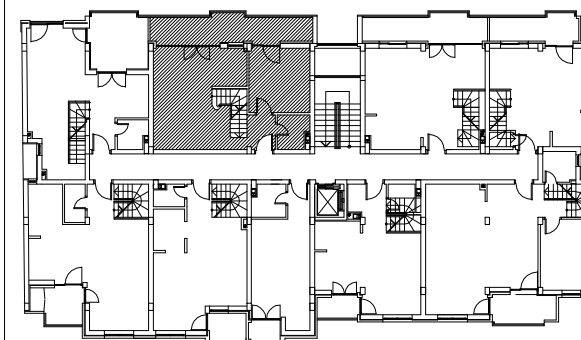
**osnova potkrovlja
R 1:100**

STAN 52 - DUPLEKS

| | | |
|-------------------|---------------------|----------------------------|
| 1 | ULAZ | 2.89 m² |
| 2 | KUHINJA | 3.91 m² |
| 3 | KUPATILO | 3.05 m² |
| 4 | DNEVNA SOBA | 21.78 m² |
| 5 | TERASA | 12.34 m² |
| 6 | SPAVACA SOBA | 11.68 m² |
| POTKROVLJE | | 55.66 m² |



ULICA DOŽA ĐERĐA



ugao ulica DOŽA ĐERĐA 21 - 23

POTKROVLJE STAN 52