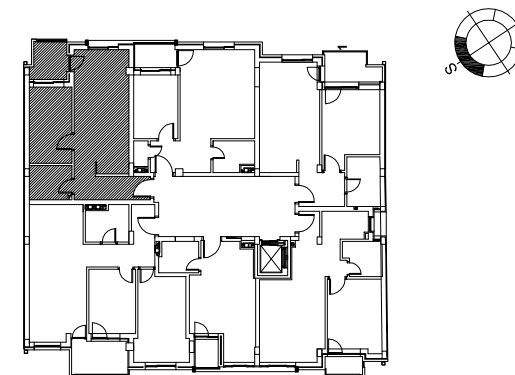


**osnova stana R 1:100**



**STAN 19 - DVOSOBAN**

<b>1</b>	<b>ULAZ</b>	<b>6.99 m<sup>2</sup></b>
<b>2</b>	<b>KUHINJA</b>	<b>3.49 m<sup>2</sup></b>
<b>3</b>	<b>KUPATILO</b>	<b>4.09 m<sup>2</sup></b>
<b>4</b>	<b>DNEVNA SOBA</b>	<b>13.72 m<sup>2</sup></b>
<b>5</b>	<b>TERASA</b>	<b>3.84 m<sup>2</sup></b>
<b>7</b>	<b>SPAVAĆA SOBA</b>	<b>9.08 m<sup>2</sup></b>
<b>UKUPNO</b>		<b>41.21 m<sup>2</sup></b>
<b>UKUPNO sa umanjnjem 3%</b>		<b>39.97 m<sup>2</sup></b>



ulica doža derda



**ulica DOŽA DJERDJA 27-29**

**III SPRAT**

**STAN 19**