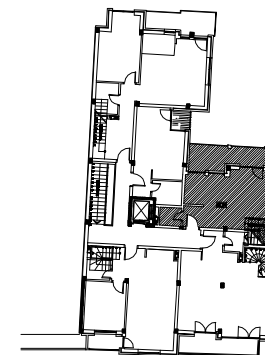
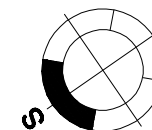


osnova stana R 1:100



STAN 17 - POTKROVLJE

1	ULAZ	2.23 m²
2	KUHINJA	3.16 m²
3	KUPATILO	2.15 m²
4	DNEVNA SOBA	21.45 m²
5	TERASA	9.31 m²
UKUPNO		38.30 m²



ULICA LAVA TOLSTOJA

ulica LAVA TOLSTOJA 53

POTKROVLJE ST. 17

