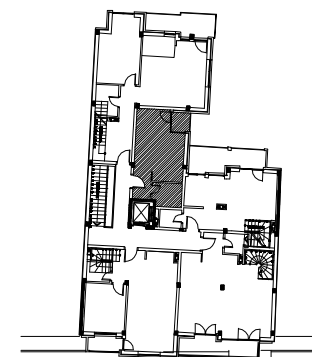
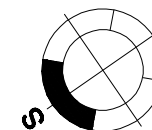


osnova stana R 1:100



STAN 18 - GARSONJERA

1	ULAZ	2.75 m²
2	KUHINJA	2.88 m²
3	KUPATILO	3.71 m²
4	DNEVNA SOBA	13.46 m²
5	TERASA	1.89 m²
UKUPNO		24.69 m²



ULICA LAVA TOLSTOJA

ulica LAVA TOLSTOJA 53

POTKROVLJE ST. 18